

Introducing SMART5Part your new 5 DIF Analyzer

- 5 part differential for WBC
- 28 parameters
- 3 histograms (WBC, RBC, PLT)
- 1 scattered diagram (2 optical axes)
- 5Part Differential Algorithm
- 60 Samples per Hour
- Less than 20µL per sampling
- 8.4 inch LCD Touch Screen - LED Backlit
- High Reliability, Life Time Tubing
- Very Compact
- New 5DIFF Technology (Patent Pending)

Parameters

WBC, RBC, HGB, HCT, MCV, RDW-CV, RDW-SD, MCH, MCHC, PLT, MPV, LYM#, LYM%, MON%, MON#, NEU%, NEU#, EOS%, EOS#, BAS%, BAS#, ALY%, ALY#, IMM%, IMM#, PCT, PDW, P-LCR



Different colors and front cover designs available

Sample Volume

Whole Blood < 20µL

Throughput

60 Samples per hour

Background counts

WBC < 0.2 ($10^3/\mu\text{L}$)
RBC < 0.02 ($10^6/\mu\text{L}$)
HGB < 0.2 (g/dL)
PLT < 10 ($10^3/\mu\text{L}$)

Precision

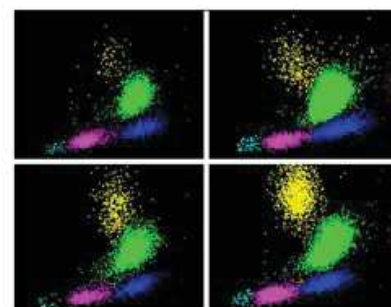
WBC > 6.0 ($10^3/\mu\text{L}$) < 2.5%
RBC > 4.0 ($10^6/\mu\text{L}$) < 2%
HGB > 12.0 (g/dL) < 1.5%
PLT > 200 ($10^3/\mu\text{L}$) < 5%

Linearity Range

WBC 0.2 - 100 ($10^3/\mu\text{L}$)
RBC 0.02 - 8 ($10^6/\mu\text{L}$)
HGB 0.2 - 24 (g/dL)
PLT 10 - 2000 ($10^3/\mu\text{L}$)

Carryover

WBC, RBC, HGB < 1%
PLT < 2%



Dimensions & Weight

405 mm x 270 mm x 430 mm
13 kg

Power Requirements

Input : 100-240 VAC, 50 to 60 Hz
Output : 24V - 6.67A - 160W

Accessories (Optional)

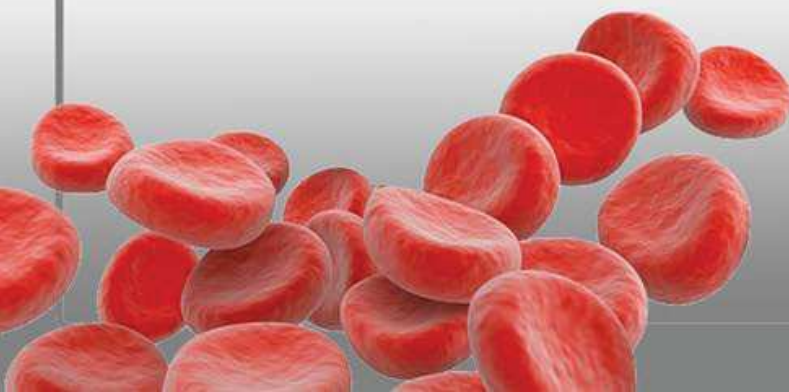
Standard «QWERTY» Keyboard
USB Barcode Reader
BW or Color Laser Printer Drivers
on request

Connections

5 USB Ports
Ethernet RJ45
Serial and LIS connections
Power Supply

Operating Environment

Working Temp. : 18-32°C
Relative Humidity : 80% at 32°C
Storage Temp. : -10°C to 50°C
Altitude : Up to 3000 meters



BIT GROUP FRANCE

Rue de la Valsière
Parc Euromédecine II
34099 Montpellier Cedex 5 - France
Tel. + 33 - 467 - 4096 00
Fax + 33 - 467 - 5822 04
<http://www.bit-group.com/c2d/>